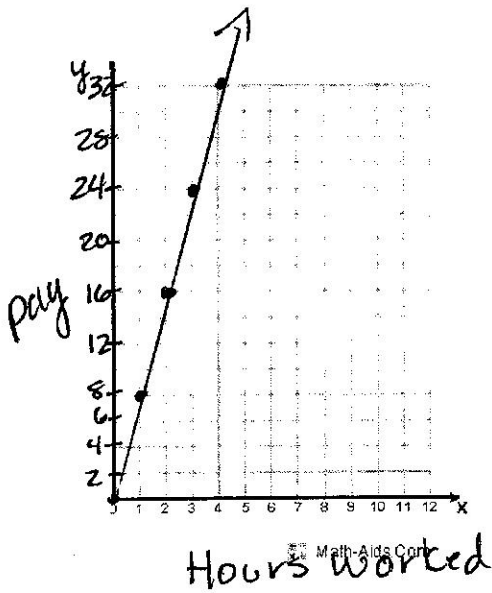


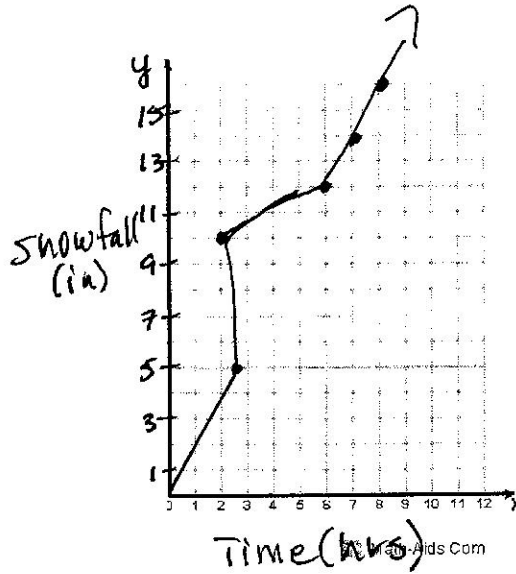
Proportional and Nonproportional Relationships in Graphs

On the graphs below, plot the values from the five tables on the Identifying Proportional and Nonproportional Relationships worksheet. Make sure to label the x-axis and the y-axis. Write appropriate numbers for the scale on the y - axes.

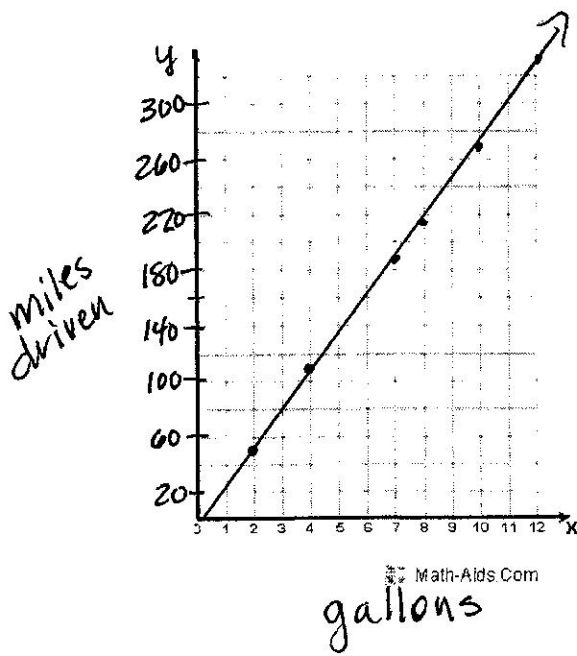
1.



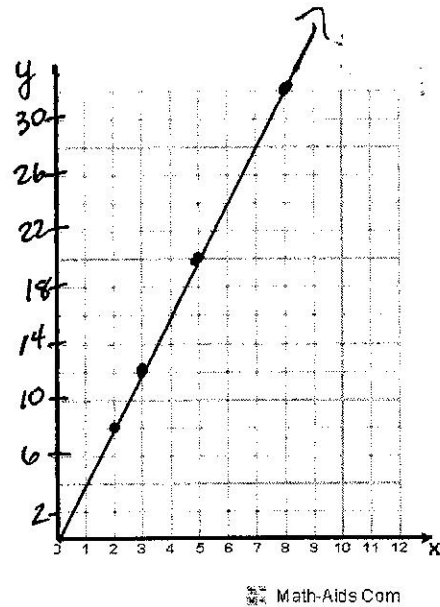
2.



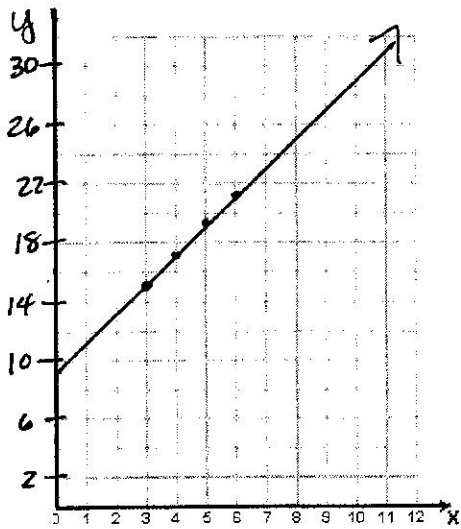
3.



4a)

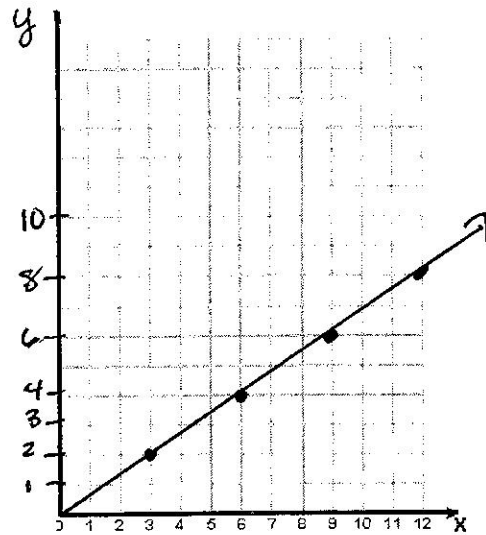


4b)



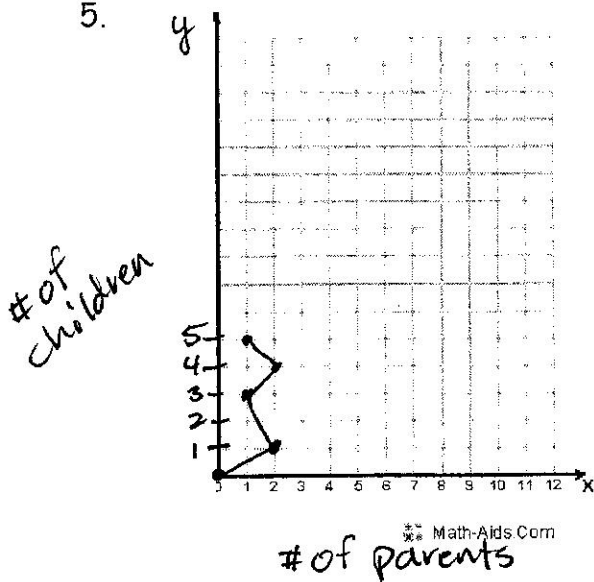
Math-Aids.Com

4c)



Math-Aids.Com

5.



Math-Aids.Com

Now that you have graphed all of the tables from the worksheet, answer the following questions. Compare the look of each graph to all of the other graphs.

Do you see any similarities in the graphs? What do you see that's different in the graphs?

The graphs for the tables that are proportional are straight lines through the origin $(0,0)$. The graphs for the tables that aren't proportional are either not a straight line or a line that doesn't go through $(0,0)$.